



## PRICELIST

### *The Earth has Shifted* Ab-Anbar (London) 18.01.24—17.02.24

4, cour de l'Île Louviers  
75004 Paris

[www.latlasparis.com](http://www.latlasparis.com)  
instagram : @latlasgalerie

Free entrance  
Tuesday to Saturday  
12 to 7 pm

[info@latlasparis.com](mailto:info@latlasparis.com)  
01 43 31 91 84

Contact  
Juliette Martineau  
[jmartineau@latlasparis.com](mailto:jmartineau@latlasparis.com)



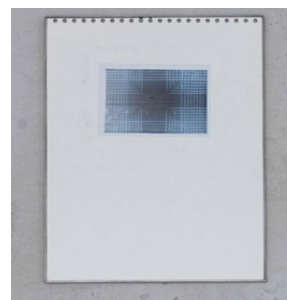
MOHAMMAD GHAZALI  
*Dredge #7 - At the end of  
Police Avenue, 2016*  
Analog photography gelatin  
silver print  
39 x 29cm  
4 000€



MOHAMMAD GHAZALI  
*Dredge #6 - I saw this table  
at the beginning of Police  
Avenue, 2016*  
Analog photography gelatin  
silver print  
39 x 29cm  
4 000€



MOHAMMAD GHAZALI  
*Dredge #15 - Year 88 building  
Keshavarz Boulevard, 2017*  
Analog photography gelatin  
silver print  
39 x 29 cm  
4 000€



MOHAMMAD GHAZALI  
*Dredge #14 - Lovers of  
Damovand highway, 2017*  
Analog photography gelatin  
silver print  
39 x 29 cm  
4 000€



MOHAMMAD GHAZALI  
*Dredge #13 - Suddenly  
eclipse beside unfinished  
Eiffel Tower in Baherestan  
Avenue, 2017*  
Analog photography gelatin  
silver print  
39 x 29 cm  
4 000€

*All prices are ex-tax*

### *The Earth has Shifted* Ab-Anbar (London) 18.01.24—17.02.24



MOHAMMAD GHAZALI  
*Dredge #12 - Liberty statue around  
Enghelab avenue, 2017*  
Analog photography gelatin silver  
print  
39 x 29 cm  
4 000€



MOHAMMAD GHAZALI  
*Dredge #11 - Center for  
astronomical studies sout  
Jamalzadeh Avenue, 2017*  
Analog photography gelatin silver  
print  
39 x 29 cm  
4 000€



MOHAMMAD GHAZALI  
*Dredge #10 - At last Damavand  
appeared from the height of  
Pardisan park, 2017*  
Analog photography gelatin silver  
print  
39 x 29 cm  
4 000€



MOHAMMAD GHAZALI  
*Dredge #9 - Aba-Saleh charity  
clinic parkway junction, 2017*  
Analog photography gelatin silver  
print  
39 x 29 cm  
4 000€



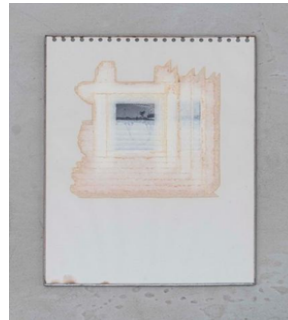
MOHAMMAD GHAZALI  
*Dredge #1 - South clouds or a  
view of Bagh Ferdows, 2016*  
Analog photography gelatin silver  
print  
39 x 29 cm  
4 000€

*All prices are ex-tax*

### *The Earth has Shifted* Ab-Anbar (London) 18.01.24—17.02.24



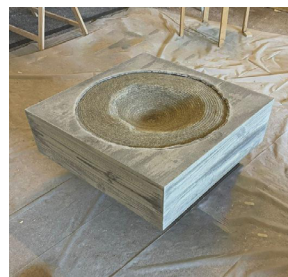
MOHAMMAD GHAZALI  
*Dredge #2 - Twins along Chamran highway, 2016*  
Analog photography gelatin silver print  
39 x 29 cm  
4 000€



MOHAMMAD GHAZALI  
*Dredge #4 - Poor districts Pegasus, 2016*  
Analog photography gelatin silver print  
39 x 29 cm  
4 000€



MOHAMMAD GHAZALI  
*Dredge #8 - The plan for sunrise is canceled, 2016*  
Analog photography gelatin silver print  
39 x 29 cm  
4 000€



MARLON DE AZAMBUJA  
*Cruzeiro do Sul #4, 2024*  
Containment concrete and hat mold  
48,5 x 47 x 29 cm  
8 500€



MARLON DE AZAMBUJA  
*Cruzeiro do Sul #5, 2024*  
Containment concrete and hat mold  
61 x 61 x 29 cm  
8 500€

*All prices are ex-tax*

### *The Earth has Shifted* Ab-Anbar (London) 18.01.24—17.02.24



MARLON DE AZAMBUJA  
*Nocturna*, 2022  
Painting, spray paint powder and natural leaves on aluminum  
180 x 160 cm  
20 000€



HUSSEIN NASSEREDDINE  
*A Few Decent Ways To Drown*, 2022  
Limestone, steel, carbon paper and sunlight  
250 x 27cm  
5 500€



HUSSEIN NASSEREDDINE  
*River Paper*, 2023  
Carbon paper  
210 x 100 cm  
3 500€



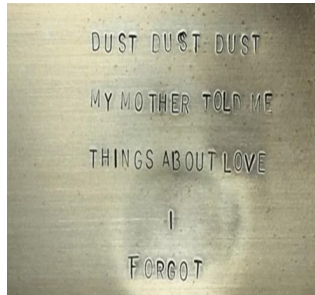
AZZEDINE SALECK  
*Stepping in, Stepping out (We reached an agreement, it was mostly silent)*, 2017  
Plaster, cotton, polyester, wood  
250 x 250 x 200 cm  
10 000€



AZZEDINE SALECK  
*Pupitre*, 2018  
Brass  
40 x 40 x 120 cm  
Edition 4/6  
3 000€

*All prices are ex-tax*

### *The Earth has Shifted* Ab-Anbar (London) 18.01.24—17.02.24



AZZEDINE SALECK  
*Pupitre*, 2018  
Brass  
40 x 40 x 120 cm  
Edition 5/6  
3 000€



AZZEDINE SALECK  
*Pupitre*, 2018  
Brass  
40 x 40 x 120 cm  
Edition 6/6  
3 000€



NEDA RAZAVIPOUR  
*The Silk Road*, 2012  
Tapestry  
10 x 1,38 m  
Edition 1/2  
50 000€



NEDA RAZAVIPOUR  
*Edge of Chaos*, 2015  
Plexiglass, ceramic, crystal, glass  
50 x 50 x 50 cm  
14 000€

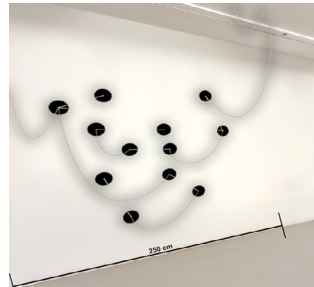
*All prices are ex-tax*



### *The Earth has Shifted* Ab-Anbar (London) 18.01.24—17.02.24



HESSAM SAMAVATIAN  
*The Memorial Image*, 2016  
Video, 5.46 minutes  
5 000€



HESSAM SAMAVATIAN  
*Constellation*, 2024  
Installation, photosensitive emul-  
sion son CDs, ball chains, nails  
Site specific dimensions  
8 000€



HESSAM SAMAVATIAN  
*Plaster Casts*, 2023 (depuis 2015)  
Plaster, pigments, photosensitive  
emulsion  
25 x 19 cm  
3 000€



HESSAM SAMAVATIAN  
*Plaster Casts*, 2023 (depuis 2015)  
Plaster, pigments, photosensitive  
emulsion  
25 x 19 cm  
3 000€



HESSAM SAMAVATIAN  
*Plaster Casts*, 2023 (depuis 2015)  
Plaster, pigments, photosensitive  
emulsion  
25 x 19 cm  
3 000€

*All prices are ex-tax*

*The Earth has Shifted*  
 Ab-Anbar (London)  
 18.01.24—17.02.24



FADDIA HADDAD  
*Masque*, 2016  
 Pigments and acrylic glue on  
 canvas  
 162 x 114 cm  
 17 000€



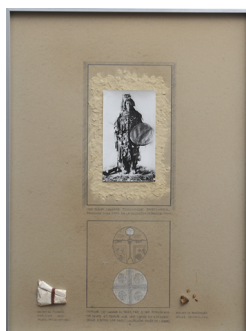
FADDIA HADDAD  
*Masque*, 2013  
 Pigments and acrylic glue on  
 canvas  
 146 x 114 cm  
 15 500€



FADDIA HADDAD  
*Masque*, 2015  
 Pigments and acrylic glue on  
 canvas  
 162 x 97 cm  
 17 000€



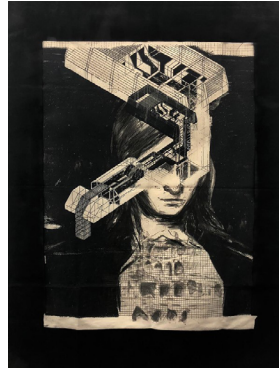
NIL YALTER  
*Chaman*, 1979  
 Video in black and white,  
 7 minutes  
 Edition 1/5  
 40 000€



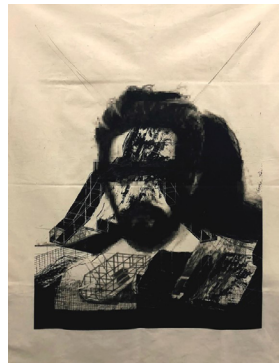
NIL YALTER  
*Chaman*, 1974  
 Silver gelatin print on collage  
 51 x 65 cm  
 Price upon request

*All prices are ex-tax*

*The Earth has Shifted*  
Ab-Anbar (London)  
18.01.24—17.02.24



BAKTASH SARANG  
*In Search of a Utopian Body IV*,  
2018  
UV flatbed print on canvas  
134 x 98 cm  
3 500€



BAKTASH SARANG  
*In Search of a Utopian Body II*,  
2018  
UV flatbed print on canvas  
134 x 98 cm  
3 500€



