

WALLAS



● 46°0'N / 2°0'W

L'ATLAS

Supported by the Emerige Group, L'Atlas is an exhibition space in the heart of La Félicité, which proposes to invite foreign galleries, foundations, or institutions to present one or more artists from the international contemporary scene.

At 4 cour de l'île Louviers (4th arrondissement), L'Atlas, galerie des mondes invites international galleries, foundations, or institutions to exhibit one or more artists from contemporary scenes that are underrepresented in France. In partnership with these major stakeholders in the world of contemporary art abroad, L'Atlas proposes an original and innovative model : a joint curation of the 5 annual exhibitions by Emerige's art projects Director Paula Aisemberg and

the invited partner. These exhibitions come with a cultural programme (conferences, meetings, readings, screenings, or concerts) and educational visits or workshops aimed at a wide audience. L'Atlas allows its partners to set up a branch in the heart of the French capital for two months, in line with the calendar of major artistic events (fairs, biennials, etc.). L'Atlas is an open door to the world, a showcase for the most dynamic private or public actors and a meeting place for artists, professionals, and the general public.

L'Atlas is part of the Emerige Group's ambitious programme of support for the contemporary art scene, with a programme focused mainly on international artists.

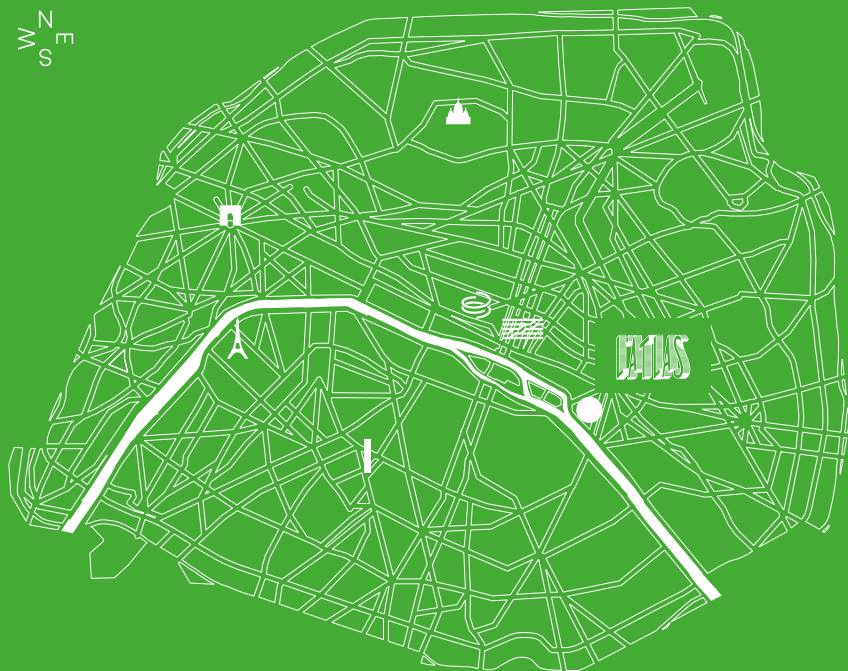


LA FÉLICITÉ

L'Atlas is situated within a unique and multi-usage project : LA FÉLICITÉ. Previously known as Morland Mixité Capitale, the first instance of "Réinventer Paris" real estate program was designed by a team of talented people: DAVID CHIPPERFIELD and CALQ ARCHITECTURE, architects, MICHEL DESVIGNE, landscape designer, OLAFUR ELIASSON and STUDIO OTHER SPACES, for the art project.

LA FÉLICITÉ opens up to its surroundings, creating links between users, inhabitants and passers by. It promotes exchanges and diverse activities all day long with access to shops, an organic market, a swimming pool, a fitness room, housings, a hotel, offices, but also a kindergarten, a hostel and urban agriculture areas. Moreover, it is a microcosm of a bubbling, effervescent city, that firmly upholds cultural expression, technological innovation and eco-responsibility.

4 cour de l'Île Louviers 75004 Paris



Tuesday – Saturday: 12 – 7pm

Free entrance

www.latlasparis.com

@latlasgalerie

ATLAS
GALERIE DES MONDES

Gallery specifications

L'Atlas offers a brick-and-mortar 2 floors' space at the entrance of Morland Mixité Capitale. The ground floor comprises a 120 sqm exhibition space and a 8 sqm's office with accommodations. The first floor comprises a 120 sqm exhibition space with an integrated projector, projection screen and sound system, as well as a small storage room.

Furniture

- A meeting table for 4 people designed by Eero Aarnio can be used at the entrance of the gallery
- A 2 people office is available for the gallery's team with a kitchenette

Lighting

- Gallery-grade track lighting and white spotlights (lighting specification are available upon request)
- Additional bespoke lighting is available upon request and at an additional cost

Security

- Live and recorded CCTV system with coverage of entrances
- Intruder alarm system included

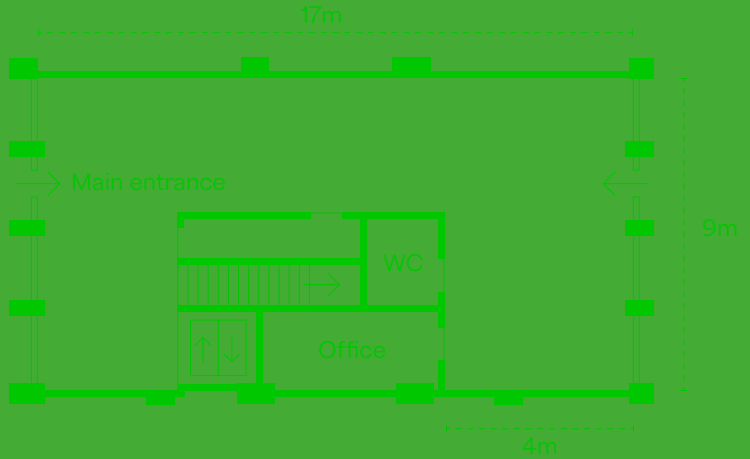
IT, Video & Sound

- 1 patch bay for sound and image control
- Built-in Sony video projector 6500 Lumens on the first floor of the gallery with unwinding projection screen
- Built-in Bose sound system in all of the exhibition spaces
- WIFI coverage

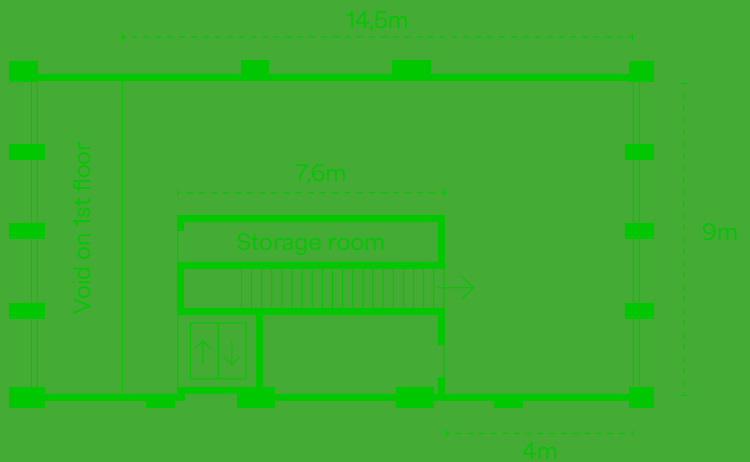
Floor plans

(See annex)

Ground floor



1st floor



Height under ceiling: 2,5m

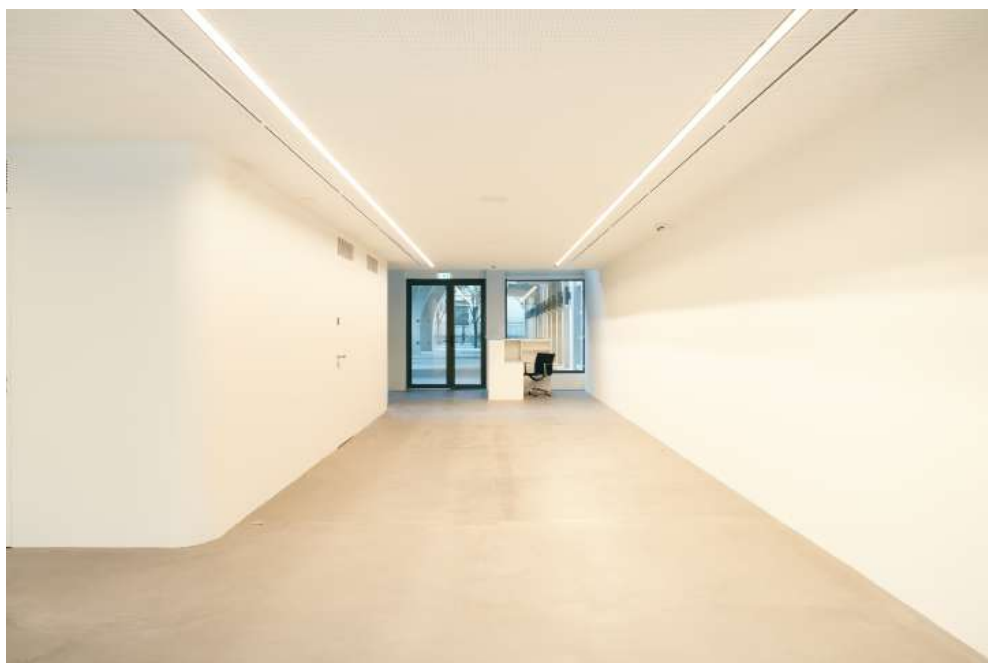




4

L'ATLAS en sculpture
Fondé par
Avec Tamara Al-Samirani, Caline Acoun,
Omar Fakihoury, Samir Shaban et Raed Yassin
Exposition du 2 septembre au 23 octobre









Participations benefits

Media and networks

Exhibition preview invitations sent by email to all of Emerige art contacts (including art institution's directors, collectors, curators etc.)

Communication on L'Atlas Instagram throughout the exhibition and on L'Atlas website

Photographs of the exhibition shot by a professional photographer, free to use by the guest partner

Participation in the VIP programs of major Paris-based art fairs (Paris +, Art Paris, Paris Photo...), and in Paris gallery map network (a physical guide printed at 20 000 copies four times a year).

On site

A qualified exhibitions' manager will be available full time at the gallery's front desk to accompany the guest partners and artists during their Parisian stay and liaising between Emerige, contractors and the invited partner.

A dedicated event curated jointly by L'Atlas and the guest partner as part of the exhibition, inviting a French critic or curator to participate to a reading, concert, screening, talk etc.

A Parisian address book is available for the guest partner: production managers, shippers, makers, framers, light designers, scenographers, cultural mediators etc.

Guided visits with institutional partners, workshops, and arts education program tailored to different publics (children, local inhabitants, tourists etc.) will be organised

Preferential rates to book rooms at the neighbouring hostel The People – Paris Marais

Participation fee

The guest partner will be asked for a participation fee.

Costs related to the exhibition production, shipping, insurance, and specific PR as well as travel and accommodation should be assumed by the guest gallery (more information upon request).

Calendar

L'Atlas will host 5 exhibitions per year, each lasting between 7 and 10 weeks and concurring with some of the vibrant Parisian and European art events.

September — October
Paris + by Art Basel

November — December
Paris Photo, new season
of the Palais de Tokyo

January — March
Paris Fashion Week

March — May
Art Paris, Venice Biennale,
Art Brussels

May — July
Art Basel, Paris Olympic Games
in 2024

Past exhibitions

Since its opening in June 2022, L'Atlas has invited 7 projects, among which 6 galleries and 1 curatorial project.

Marfa's (Beyrouth, Lebanon)
09.09.22 – 23.10.22

THE PILL ® (Istanbul, Turkey)
08.11.22 – 23.12.22

The Naked Room (Kyiv, Ukraine)
12.01.23 – 04.03.23

Hestia (Belgrade, Serbia)
17.03.23 – 13.05.23

Selebe Yoon (Dakar, Senegal)
24.05.23 – 22.07.23

1 Mira Madrid (Madrid, Spain)
21.09.23 – 28.10.23

Roots to Routes (Tallinn, Estonia)
07.11.23 – 22.12.23



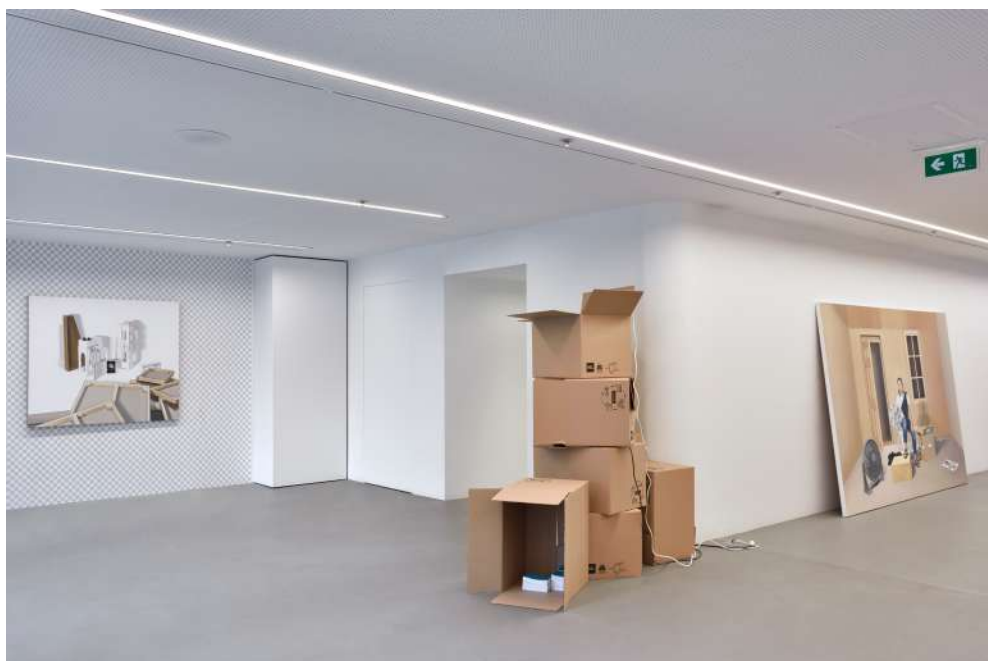
View of the exhibition, *Fondu Ré-enchainé*, Marfa. Photo : Aurélien Mole



View of the exhibition, *Fondu Ré-enchainé*, Marfa. Photo : Aurélien Mole



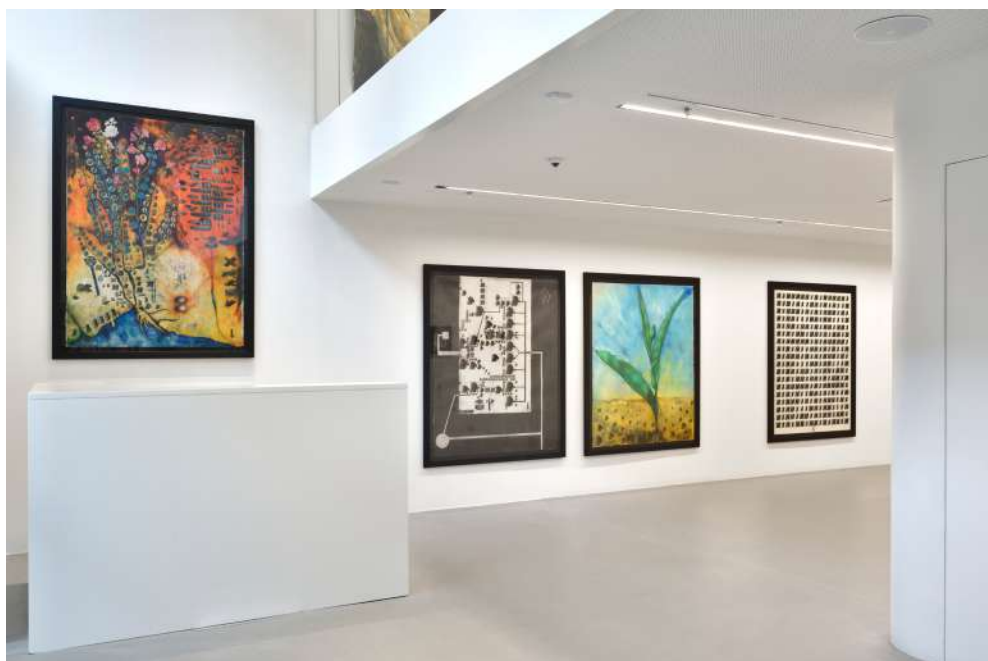
View of the exhibition, *Cosa Mentale, THE PILL @*. Photo : Rebecca Fanuele



View of the exhibition, *Cosa Mentale, THE PILL @*. Photo : Rebecca Fanuele



View of the exhibition, *It's Only Achilles's Heel That Left*, The Naked Room. Photo : Rebecca Fanuele



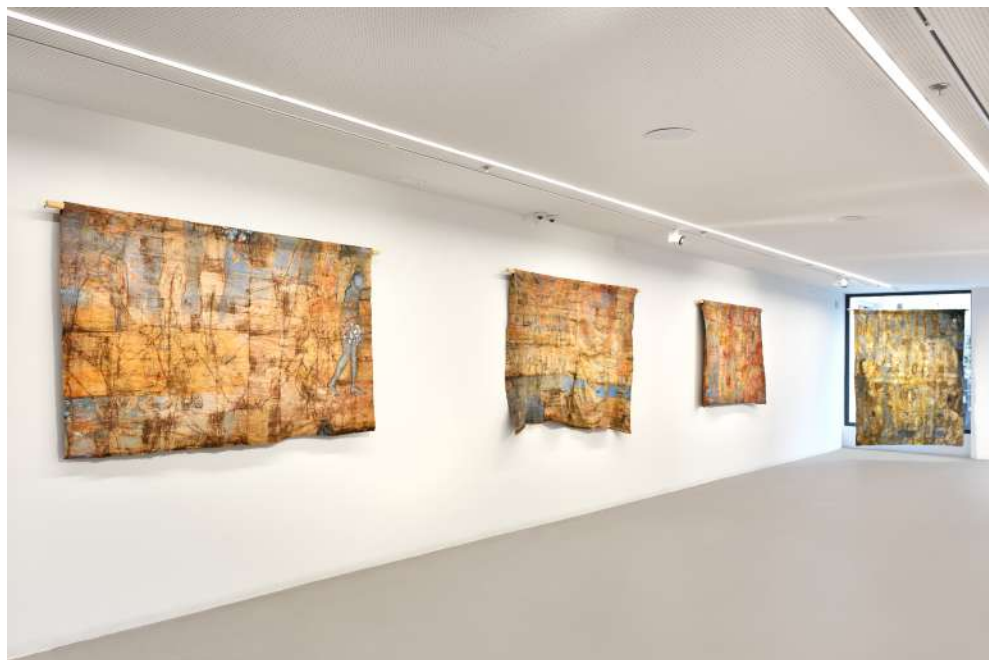
View of the exhibition, *Abacadabra*, The Naked Room. Photo : Rebecca Fanuele



View of the exhibition, *Intimate / Outspoken*, Hestia. Photo : Rebecca Fanuele



View of the exhibition, *Intimate / Outspoken*, Hestia. Photo : Rebecca Fanuele



View of the exhibition, *Que je naisse, tout doux, semant*, Selebe Yoon. Photo : Rebecca Fanuele



View of the exhibition, *Dérives en péninsule*, Selebe Yoon. Photo : Rebecca Fanuele



View of the exhibition, *Exile is a hard job*, 1 Mira Madrid. Photo : Rebecca Fanuele



View of the exhibition, *Exile is a hard job*, 1 Mira Madrid. Photo : Rebecca Fanuele



View of the exhibition, *Breathing through the eyes, Roots to Routes*. Photo : Rebecca Fanuele



View of the exhibition, *Breathing through the eyes, Roots to Routes*. Photo : Rebecca Fanuele

About Emerige Real Estate Group

For 30 years, Emerige has been designing the Greater Paris of tomorrow with passion, high standards and responsibility. All our real estate projects aim to contribute to better living together in a more beautiful city. The homes, offices and shops we design are all places of life where the well-being of the inhabitants, singularity and architectural sustainability are central concerns and where art and contemporary artistic creation hold a special place.

As a patron of culture and a passionate defender of contemporary creation year after year, Emerige supports events in France and abroad

that promote the French art scene. Through its grant “Bourse Révélations Emerige” created in 2014, it offers the young generation of visual artists the opportunity to make a name for themselves and to join leading galleries. Convinced that art can change everyday life, Emerige encourages the bringing together of culture with all audiences, especially the youngest. It supports artistic and cultural education programs such as “Une journée de vacances à Versailles”, the Collège de France Foundation, the “Festival d’Automne” and Gérard Garouste’s association “La Source”.

Team & Contact

Laurent Dumas
Founder of the Emerige group,
Chair of the Board of the
Palais de Tokyo and art collector

Paula Aisemberg
Director of Art projects at Emerige,
former director of La Maison Rouge,
Paris

Joséphine Dupuy Chavanat
Manager of Art projects at Emerige
jdupuychavanat@emerige.com

Juliette Martineau
Project manager at L’Atlas
jmartineau@atlasparis.com
01 43 31 91 84



L'ATLAS

46°0'N / 2°0'W

4 cour de
l'Île Louviers
75004 Paris

info@
latlasparis.com
@latlasgalerie

